

National Parks & Wildlife Service

Killeglan Bog Complex SAC (Site code 002192)



Raised Bog Restoration Plan (Report)

Version 2

March 2023

Contents

1	INTRODUCTION	3
1.1	PURPOSE OF THE RESTORATION PLAN.....	3
1.2	KILLEGLAN BOG COMPLEX SAC	3
1.3	SITE-SPECIFIC CONSERVATION OBJECTIVES	4
2	RESTORATION MEASURES AT KILLEGLAN BOG COMPLEX SAC.....	4
2.1	INTRODUCTION	4
2.2	BLOCKING OF HIGH BOG DRAINS	5
2.3	BLOCKING OF DRAINS ON CUTOVER BOG	6
2.4	CONTOUR BUNDING	7
2.5	CELL BUNDING	8
2.6	GENERAL SITE MANAGEMENT	9
3	DRAINAGE MANAGEMENT PLAN	10
4	COMMUNITY BENEFITS	10
5	RESTORATION PLAN IMPLEMENTATION	11
5.1	PREPARATORY	11
5.2	PROGRESS TO DATE	12
6	REFERENCES	15
7	GLOSSARY & ACRONYMS	16

Maps:

Map 1 - Killeglan Bog Complex SAC Boundary	13
Map 2 - Killeglan Bog Complex SAC Restoration Proposals	14

1 Introduction

1.1 Purpose of the Restoration Plan

This restoration plan has been developed by National Parks and Wildlife Service (NPWS) of the Department of Housing, Local Government and Heritage to set out proposals for restoration of raised bog and associated habitats at Killeglan Bog Complex Special Area of Conservation (SAC) (002192). This plan identifies technically feasible restoration measures for the various zones of the bog including the high bog, cutover bog and surrounding margins and provides details of progress on implementation of their restoration plans.

The restoration measures set out will enable nature conservation targets for Active Raised Bog (ARB) at this SAC to be met. Although the focus of the restoration plan is on ARB habitat, it is anticipated that restoration measures will also benefit other peatland habitats and can contribute to socio-economic benefits for the local community, improvements to biodiversity and reduced carbon emissions. Monitoring of this restoration plan will be undertaken to ensure that the intended restoration measures are successfully contributing to the achievement of the site-specific targets for ARB at Killeglan Bog Complex SAC.

Action 1.1: Develop restoration plan further in partnership with stakeholders.

This plan will be developed further in conjunction with stakeholders to ensure that restoration is carried out in such a way that the conservation requirements of the site can be met, whilst minimising any impacts on adjacent land and maximising benefits to the local community. The plan will develop and change over time through input from stakeholders and will be considered a living document. The primary aim of this restoration plan is to ensure site-specific conservation objectives for KilleglanBog SAC can be met.

Section 2 of the restoration plan sets out the restoration measures that have been proposed for Killeglan Bog Complex SAC. Section 3 outlines how a drainage management plan for Killeglan Bog Complex has been developed as part of this restoration plan. Section 4 describes potential for community benefits to be explored and section 5 outlines progress with implementation of the plan.

Map 1 outlines the location and extent of Killeglan Bog Complex SAC. Map 2 restoration measures that have been implemented to date as well as any proposed/outstanding restoration measures to be implemented at Killeglan Bog Complex.

This document provides an outline of the restoration plan but is supported by detailed datasets that are available on the NPWS Restoration Maps Viewer. This map viewer provides NPWS with an up-to-date view of all restoration plan details and supporting information including status of landowner investigations, landowner consent, progress with construction and details of proposed and remaining restoration measures.

1.2 Killeglan Bog Complex SAC

Killeglan Bog Complex SAC is located approximately 9km due north of Ballinasloe, mainly in the townlands of Feevagh More, Porteen, Glenmore, Cregganycarna, Killeglan, Coolfree and Camlagh, Co. Roscommon. The site comprises five main bog areas with a rich mosaic of habitats which include raised bog, cutover bog, lake, scrub, wet woodland, hazel woodland, species rich wet grassland, poor fen, river, riparian zones, and humid grassland.

The SAC has been selected for three Annex I habitats. The peatland habitats for which the site has been selected include:

- [7110] Active raised bogs*
- [7120] Degraded raised bogs still capable of natural regeneration

- [7150] Depressions on peat substrates of the *Rhynchosporion*

The five raised bogs in the Killeglan Bog Complex SAC include Goats Lough Bog North, Goats Lough Bog South, Cregganycarna Bog, Cloonkeen Bog, and Cuckoo Hill Bog. The site has a typical Western Raised Bog topography. Sections have significant slopes and there are also several low raised mounds with dry heath vegetation within the raised bogs in the complex.

These bogs were drained in the early 1980s but were never industrially harvested for peat and the surface vegetation has remained largely intact. Some restoration work to re-instate active raised bog by blocking surface drains on the site and re-wetting the high bog has been undertaken on Cuckoo Hill Bog (2011) by Bord na Móna. The site is bounded by callow grassland and the River Suck to the west, and agricultural land to the north, east, and south.

The majority of high bog areas within the Killeglan Bog Complex SAC are dominated by non-active raised bog habitat, as a result of the extensive network of surface drains installed on the site in preparation for industrial peat extraction.

No significant areas of active raised bog habitat are present on the site, although there are several wet areas on the various high bog sections, often associated with degraded bog pool areas that have extensive bog moss (*Sphagnum* spp.) cover. Some of these areas could be considered active raised bog due to the abundance of *Sphagnum* species. It is likely that the restoration measures, involving the blocking of drains, which have been undertaken on Cuckoo Hill Bog, will allow non-active raised bog areas to develop into active raised bog.

1.3 Site-specific conservation objectives

Detailed site-specific conservation objectives (SSCOs) aim to define the conditions necessary to maintain or achieve the favourable conservation condition of a habitat or species at site level. The maintenance of habitats and species within sites at favourable condition will contribute to the maintenance of favourable conservation status of those habitats and species at a national level.

A conservation objective has been set for Killeglan Bog Complex SAC for ARB habitat using attributes and targets based on parameters set out in the Habitats Directive. In summary, one of the key targets is to restore the area of ARB to 73 ha. The area of ARB was reported as 4.3 ha during the latest ecological surveys (2011) and it has been determined that there is potential for 65.7 ha of Degraded Raised Bog (DRB) to be restored to ARB on the high bog following restoration measures. There is also long-term potential for 3 ha of bog peat-forming habitats (BPFH) to develop if restoration measures are undertaken on cutover areas. Several targets have been set for other attributes relating to the quality and condition of ARB habitat, including a target to restore adequate transitional areas to support/protect the active raised bog and the ecosystem services it provides. The restoration measures proposed by this restoration plan aim to achieve these targets. Further information on the SSCO can be found in the Killeglan Bog Complex SAC conservation objectives document (NPWS, 2015a) and the conservation objectives supporting document – raised bog habitats (NPWS, 2015b).

2 Restoration measures at Killeglan Bog Complex SAC

2.1 Introduction

Hydrological processes are key drivers of raised bog ecology, as raised bogs are predominately fed by precipitation. For ARB to develop or be maintained, mean water levels need to be near or at the bog's surface for most of the year. Seasonal fluctuations should not exceed 20cm below ground surface, and water levels in the peat should be within 10cm of the surface, except for very short periods of time (Kelly & Schouten 2002). Gentle slopes that limit intermittent lateral losses of water (through surface run-off) and encourage sustained water-logging are the most favourable to achieve

these conditions. These conditions may be maintained on steeper slopes in areas of focused flow (flushes) (Mackin et al., 2017a; Regan et al., 2020). However, it will not be possible to raise the water level to high enough levels across the entire high bog surface, particularly approaching marginal areas, to enable ARB to develop. Even in high bog areas that do not have potential for ARB to form, water levels should be raised as necessary to support habitat for the areas where ARB can occur.

The main aim of restoration on raised bogs is to maintain or improve the quality of existing areas of ARB or improve the hydrological conditions that will allow ARB to develop in areas with suitable topographic conditions (gentle slopes and/or areas of focused flow). This requires measures to be implemented on both the high bog and cutover areas. Measures implemented on selected areas of cutover will also help to minimise the impact that drainage and cutting has had on the hydrological integrity of the high bog and support a diversity of other transitional wetland habitats (e.g., wet woodland and fen), as well as the species they sustain. Once restored, these transitional cutover zones may provide further ecosystem services through flood attenuation and water supply maintenance and purification, increased carbon sequestration and improvements to the site's overall biodiversity value.

The main restoration measures that may be considered for improving hydrological conditions on raised bogs include:

- Drain blocking (includes drains on both high bog and the margins)
- Removal of forestry/tree clearance
- Installation of marginal dams
- High bog excavation/re-profiling
- Inoculation with *Sphagnum* species
- Bunding on high bog or cutover bog

Further details on each of these measures can be found in Irish Wildlife Manual No. 99 'Best practice in raised bog restoration in Ireland' (Mackin et al., 2017b). Additional measures may be considered in particular instances where there are specific problems that are causing damage to an SAC. The most relevant restoration measures for Killeglan Bog Complex SAC are outlined in Section 2.2 – 2.6 below.

2.2 Blocking of high bog drains

Blocking high bog drains slows the flow of water off the surface of the bog and increases the water table in the peat. Drain blocking is a proven and effective restoration measure on Irish raised bogs with minimal maintenance requirements. The approach has been demonstrated at a number of raised bogs in Ireland with very positive results evident in less than 10 years (**Figure 2.1**) as outlined by Fernandez *et al.* (2014).

Sometimes, there are concerns from local communities living close to raised bogs that drain blocking on the high bog will result in, or exacerbate, flooding. Blocking high bog drains, in fact, slows the flow of water off the bog potentially reducing the frequency and magnitude of flood events by restoring the hydrological function of the bog. To address these concerns NPWS have developed a drainage management plan for Killeglan Bog Complex with further details of this plan outlined within section 3.



Figure 2.1 Example of a peat dam to block a typical high bog drain.

Action 2.1: Block high bog drains within Killeglan Bog Complex SAC.

There is an extensive drainage network on the high bog at Killeglan Bog Complex as the site was industrially pre-drained in the past but never harvested for peat. Drains within many of the individual bogs including Cuckoo Hill Bog have already been blocked by Bord na Móna. It is proposed that all remaining unblocked drains on the high bog surface are blocked with peat dams. Details of the locations of unblocked drains on the high bog can be found in Map 2.

2.3 *Blocking of drains on cutover bog*

Blocking of cutover drains slows the flow of water off the cutover areas and increases the water table in the surrounding peat. This can help to reduce the rate of infiltration through the high bog and can lead to conditions that allow peat to form on the cutover (**Figure 2.2**).

Drain blocking on cutover areas has been carried out at a number of raised bogs in Ireland to date resulting in the development of peat-forming vegetation on cutover areas. As with blocking of high bog drains, there are sometimes concerns from local communities living close to raised bogs that drain blocking on cutover bog will result in, or exacerbate, flooding. Blocking drains on cutover bog can slow the rate at which water is lost from the bog therefore potentially reducing the frequency and magnitude of downstream flood events. This restoration measure is primarily focused on former spread-grounds and only in very rare occasions, where it is absolutely essential, includes agricultural land. Drains in these areas will only be blocked in agreement with landowners and where there is a suitable hydrological barrier such as a functional drain to prevent impacts outside of the restoration area.



Figure 2.2 Water table at the surface of cutover bog following successful drain blocking resulting in *Sphagnum* development less than 10 years after drain blocking (this was previously an area of bare peat)

Action 2.2: Block drains on selected cutover areas within Killeglan Bog Complex SAC.

There are several cutover areas surrounding the bog where blocking of drains may reduce ongoing subsidence of the high bog. In some areas this will also lead to the development of peat forming habitats. It is proposed that these drains are blocked, primarily with peat dams, with some plastic reinforcements where necessary to prevent erosion. The required conditions are for the water table to be maintained at or close to the surface, therefore large areas of standing water or deep pools are not desired. Details of the locations on the cutover where it is proposed to block drains can be found in Map 2.

2.4 Contour bunding

Contour bunds on the high bog aims to reduce the rate of lateral flow through the upper layers of the peat. In contrast to some other bunding techniques, contour bunding is not intended as a means of impounding surface water. This method involves excavating a trench 1.5-2.0m deep, re-compacting peat into the trench and building a slightly raised bund 25-30cm above the current ground surface. In addition, these bunds have 5m long ‘finger bunds’ constructed using the same

technique at approximately 25m spacing to prevent flow along the bund which may lead to erosion. After 1-2 years it is anticipated that the bund will have subsided close to current ground level and therefore will not appear as a prominent feature on the bog surface.



Figure 2.3 Example of contour bund constructed at Knockacoller Bog SAC, Co. Laois

Contour bunds are most effective where there is cracking or slumping in the upper layers of the peat as the re-compacted trench assists in sealing up these cracks and slows the flow rate through the peat, supporting a higher water table behind the bund. The key issue with this technique is that the extent of the impact extending back into the bog depends on the hydraulic gradient (which is closely correlated to surface slope). As a result, the extent of impact from such bunds is likely to be extremely limited where the surface slope at the margins is steep. This method is best suited to sites with a relatively gentle slope towards the margins or as a means of effectively blocking a dense network of shallow surface drains on the high bog. Ground conditions will play an important factor in whether the bund can be constructed in such circumstances, therefore this method is most effective on drier sites where machines can operate safely and effectively.

Action 2.3: Assess the feasibility of contour bunding on the high bog at Killeglan Bog Complex SAC

Contour bunding has not been proposed for Killeglan Bog Complex SAC. The potential for this measure should be explored through the restoration plan review process. Proposals should be informed by monitoring the response from this measure at other restoration sites.

2.5 Cell bunding

Cell bunding involves the creation of individual cells, consisting of a cutoff walls extending into the peat substrate and protruding above the ground surface to create a water table close to or slightly above the ground surface (maximum depth typically 10-20cm). The approach permits the interception of laterally flowing groundwater by low permeability cutoff walls, while the surface bunds prevent lateral discharge of surface water; this also encourages recharge to the underlying

water table, helping contribute to the water balance, while also maintaining an elevated water table in those areas up gradient of standing water. Due to topographic variable the depth of water will also vary significant resulting in significant ecological diversity across the bunded area.

Cell bunds are typically constucted by excavating a trench 1.0-1.5m deep, recompacting the excavated peat into the trench and constucting a bund 0.5-0.6m high above the ground surface (Figure 2.3). Water level control structures (pipes or overflow weirs) are incorporated into these cells as a means to regulate water levels and evenly distribute water across the site.



Figure 2.4 Example of existing cell bund constructed at Cloncrow Bog NHA

Action 2.4: Assess the feasibility of cell bunding at Killeglan Bog Complex SAC

Cell bunding has not yet been proposed for Killeglan Bog Complex SAC; however, though a review of this restoration plan, an assessment should be completed to determine the potential for implementing enhanced measures. Some cutover areas appear to have suitable conditions to allow implementation of this measure. Proposals should be informed by monitoring the response from this measure at other restoration sites.

2.6 General site management

In addition to the proposed measures, it is important that the restoration plan contributes to improving general site management. This includes considering issues such as:

- Fire prevention and response
- Management of littering/fly-tipping

Burning of the high bog can result in significant damage to a raised bog by removing peat-forming

vegetation which reduces the capacity of the peat to retain water. This causes much more rapid surface run-off and therefore can result in more widespread drying out and increased peak flows in surrounding streams.

Issues such as littering and fly-tipping are also common problems on raised bogs. Depending on the nature of the material dumped this can lead to pollution in surrounding areas.

Action 2.5: Prepare a fire prevention and control plan for Killeglan Bog Complex SAC in consultation with local stakeholders.

It is proposed that a fire prevention plan is developed for Killeglan Bog Complex SAC to identify past occurrences of fires, the likely causes and develop an effective plan to prevent fires in future as well as an appropriate response should a fire occur in the future. Issues such as fire prevention and management of littering/fly-tipping also need to be addressed as part of a wider strategy of raising public awareness on the importance of these habitats.

3 Drainage Management Plan

One issue that can cause concerns, particularly for local stakeholders, relates to whether restoration may result in increased flooding in the surrounding area. In many instances bog restoration has the opposite effect by returning more natural hydrological conditions whereby flow is attenuated and reaches the surrounding watercourses more slowly than when drains were present. This is evident at bogs such as Killyconny Bog SAC (000006) where extensive restoration has been carried out on cutover bog and there have been no adverse impacts on adjoining agricultural land.

Nonetheless, many individuals may remain unconvinced on these issues until several years after restoration has taken place. Therefore, in order to provide reassurance, an integrated drainage management plan for the bog and its surroundings has been developed as part of this restoration plan. The drainage management plan will be intended to support the conservation objectives for Killeglan Bog Complex SAC by ensuring that the drainage network can be maintained without impacting on the conservation objectives. The plan assesses instances existing impediments to the effective management of the drainage network (e.g. undersized culverts or channels) and provides recommendations in relation to remedial works and maintenance works going forward. Implementation of such measures will ensure that the risk of flooding will be significantly reduced.

Action 3.1: Implement the actions of the Drainage Management Plan for Killeglan Bog Complex SAC in conjunction with local stakeholders.

Implementing this plan will require input from local stakeholders to ensure that required actions can be implemented.

4 Community Benefits

Through consultation with the local community and other stakeholders it will be possible to develop ideas for maximising socio-economic benefits for the local community through restoration. These might include building or improving existing facilities, where appropriate (i.e., tracks, board walks, bog bridges), encouraging the creation of small tourism enterprises, promoting the benefits to human health and well-being and enhancing the value of the site as an educational resource. There are many cases where local communities, including local businesses, are actively involved in or supporting the conservation and restoration of raised bogs across the country. Examples of this are found at Abbeyleix Bog (Co. Laois), Carrownagappul Bog SAC (Co. Galway), Girley Bog Natural Heritage Area (NHA) (Co. Meath), Lodge Bog (Co. Kildare) and Scohaboy Bog NHA (Co. Tipperary).

Killeglan Bog Complex already has several access tracks that previously would have been used by Bord na Móna to permit machine access. In recent years these routes have permitted access for machines to block drains on the high bog. There is significant potential for investment in upgrading,

expanding and maintaining these tracks as access routes for amenity and recreation. Any proposed amenity facilities will need to be implemented in a way that does not impact on the site-specific conservation objectives for the site.

Apart from immediate economic benefits, the restoration of raised bogs can provide many other benefits to the wider community, such as provision of clean water, flood attenuation and water flow regulation, preservation of archaeological artefacts and other sources of historical knowledge and, not least, helping Ireland reduce its national greenhouse gas emissions and, therefore, helping to combat climate change.

Action 4.1: Optimise the community benefits of the restoration plan.

As the restoration plan is further developed and implemented, opportunities to improve the recreation and amenity value of the bog and surrounding areas and promote local initiatives, while protecting and enhancing its natural values, will be explored by and with the local community. Promoting community involvement in the long-term management of the site both during and after restoration measures are carried out, will be encouraged.

5 Restoration Plan Implementation

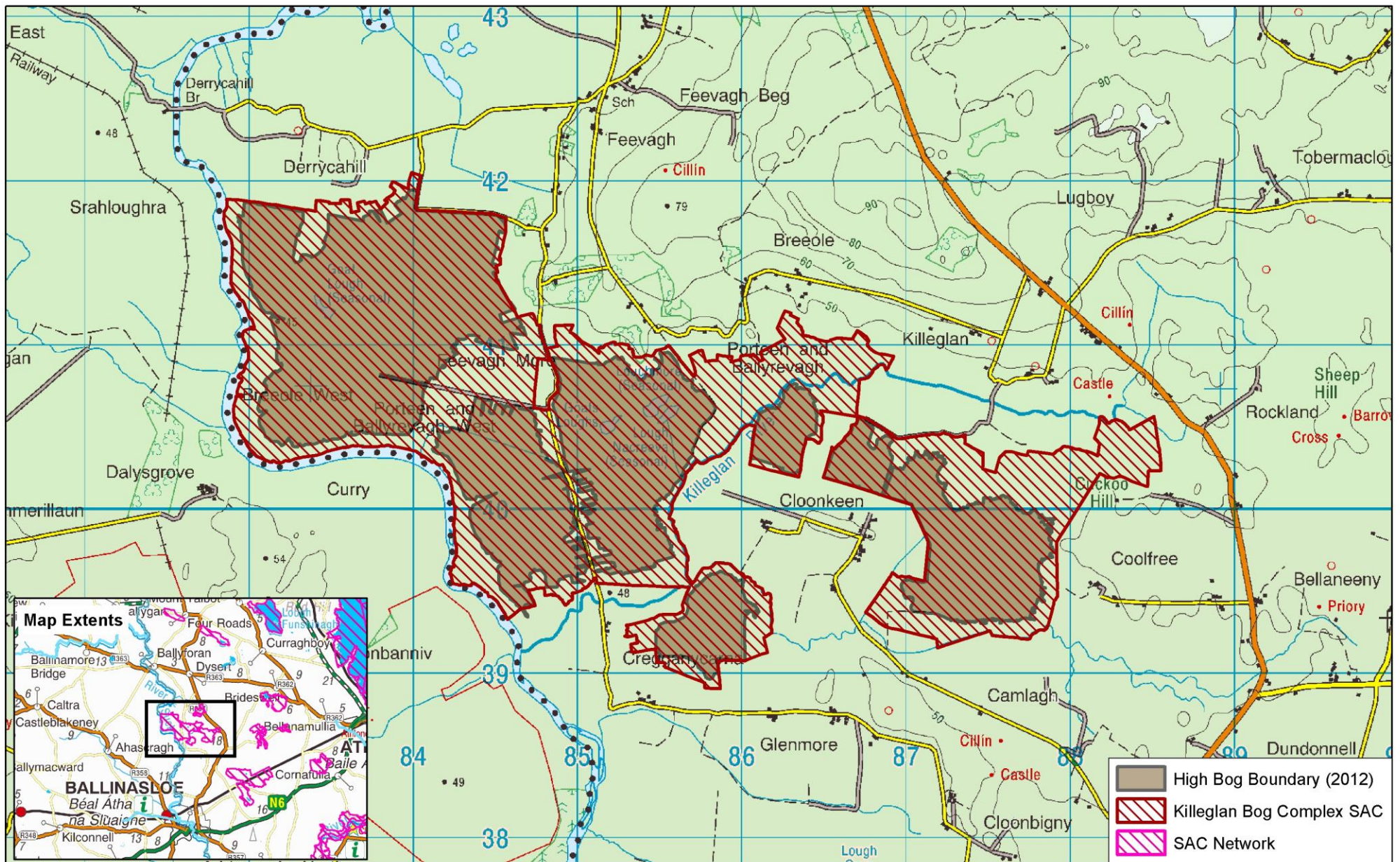
5.1 Preparatory

Prior to implementation of the restoration plan several preparatory actions are required before construction of restoration measures can commence. A summary of these preparatory actions is outlined below:

- Hydrological characterisation – collation of existing hydrological data, hydrological surveys, instrumentation with monitoring data (where necessary);
- Review of proposed restoration measures in line with best practice at the time of implementation (including exploring opportunities to implement enhanced measures);
- Detailed ecological surveys (primarily comprising surveys of cutover areas, but where necessary also includes high bog areas e.g., if ecotopes have not been surveyed in many years);
- Landownership Investigations (investigations into ownership, turbary rights etc.);
- Stakeholder consultation and community engagement (meeting with stakeholders to outline restoration plans and consider any concerns raised by the local community);
- Compensation/land acquisition (compensation or acquisition of lands required to implement the required restoration measures on private lands);
- Appropriate Assessment Screening;
- Compilation of tender/construction documents including preparation of health and safety file;
- Surveying and setting out of the works;
- Implementation of restoration measures (including construction supervision and contract administration);
- Post-works inspections and preparation of as-built survey information;
- Update of restoration plan to outline works completed and remaining works required in future.

5.2 Progress to date

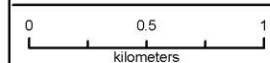
Significant progress has been made in implementing the proposed restoration plan at Killeglan Bog Complex SAC, with extensive restoration works already completed by Bord na Móna. Further updates will be provided as progress is made with the implementation of the restoration plan.



An Roinn Ealaíon, Oidhreacht, Gnóthaí Réigiúnacha, Tuaithe agus Gaeltachta
Department of Arts, Heritage, Regional, Rural and Gaeltacht Affairs

Map 1 Killeglan Bog Complex SAC

Site Name: Killeglan Bog Complex SAC
Site Code: 002192; Version 1
County: Roscommon

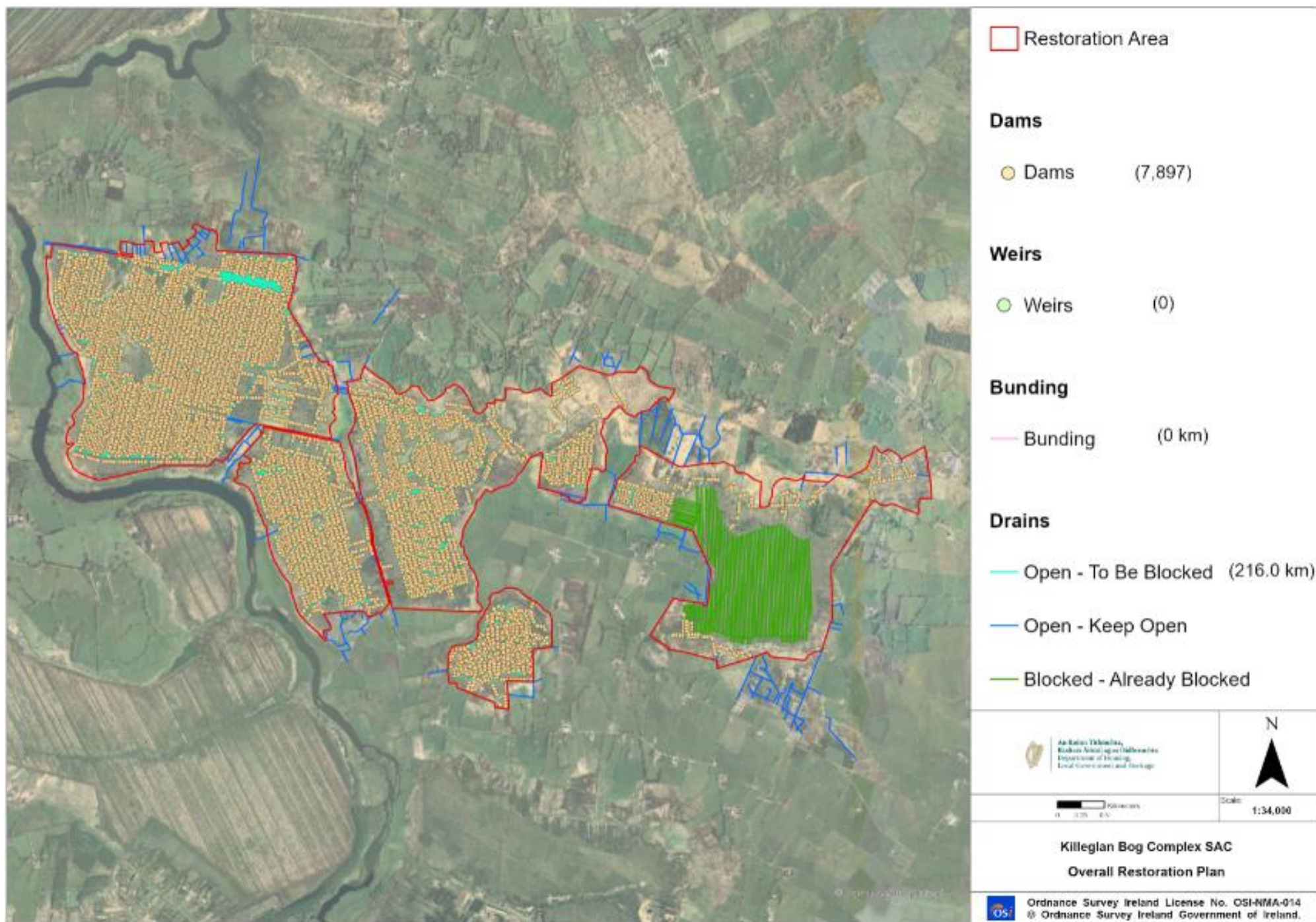


The mapped boundaries are of an indicative and general nature only. Boundaries of designated areas are subject to revision.
Ordnance Survey Ireland Licence No EN 0059216 © Ordnance Survey Ireland / Government of Ireland

Níl sna teorainneacha ar na léarscálanna ach nod arshuíomhach ginearálta. Féadfar athbheithnithe a déanamh ar theorainneacha na gceantar comharthaíthe. Suirbhéaracha Ordonáis na hÉireann Ceadúnas Uimh EN 0059216. © Suirbhéaracha Ordonáis na hÉireann Rialtas na hÉireann

N
Map Version No.1

Map 1 - Killeglan Bog Complex SAC Boundary



Map 2 - Killeglan Bog Complex SAC Restoration Proposals

6 References

- Fernandez, F., Connolly K., Crowley W., Denyer J., Duff K. & Smith G. (2014) Raised Bog Monitoring and Assessment Survey 2013. Irish Wildlife Manuals, No. 81. National Parks and Wildlife Service, Department of Arts, Heritage and Gaeltacht, Dublin, Ireland.
- Fernandez, F., MacGowan, F., Crowley, W., Farrell, M., Croal, Y., Fanning, M. & McKee M. (2006) Assessment of the impacts of turf cutting on designated raised bogs 2003-06. Unpublished report, National Parks and Wildlife Service, Department of Environment, Heritage and Local Government, Dublin.
- Kelly, L., Doak, M. & Dromey, M. (1995) Raised Bog Restoration Project: An Investigation into the Conservation and Restoration of Selected Raised Bog Sites in Ireland. Part 1 Summary Reports. National Parks & Wildlife Service, Department of Environment, Heritage and Local Government, Dublin.
- Kelly, L. & Schouten, M.G.C. (2002) Vegetation. In: Schouten, M.G.C. (ed.), Conservation and restoration of raised bogs: geological, hydrological and ecological Studies. Dúchas – The Heritage Service of the Department of the Environment and Local Government, Ireland; Staatsbosbeheer, the Netherlands; Geological Survey of Ireland, Dublin. pp. 110-169.
- Mackin, F., Flynn, R., Barr, A & Fernandez-Valverde, F. (2017b) Use of geographical information system-based hydrological modelling for development of a raised bog conservation and restoration programme. *Ecological Engineering*, 106(Part A); pp. 242-252.
- Mackin, F., Barr, A., Rath, P., Eakin, M., Ryan, J., Jeffrey, R. & Fernandez Valverde, F. (2017a) Best practice in raised bog restoration in Ireland. *Irish Wildlife Manuals*, No. 99. National Parks and Wildlife Service, Department of Culture, Heritage and the Gaeltacht, Ireland.
- NPWS (2015a) Killeglan Bog Complex SAC (site code 002192) Conservation objectives. National Parks and Wildlife Service, Ireland.
- NPWS (2015b) Killeglan Bog Complex SAC (site code 002192) Conservation objectives supporting document - raised bog habitats. National Parks and Wildlife Service, Ireland.
- Regan, S., Swenson, M., O'Connor, M. & Gill, L. (2020). Ecohydrology, Greenhouse Gas Dynamics and Restoration Guidelines for Degraded Raised Bogs. A report prepared for the Environmental Protection Agency, Ireland.
- Smith, G.F. & Crowley, W. (2020) The habitats of cutover raised bog. Irish Wildlife Manuals, No. 128. National Parks and Wildlife Service, Department of Housing, Local Government and Heritage, Ireland.

7 Glossary & Acronyms

ACTIVE RAISED BOG (ARB)	Areas of uncut raised bog where the conditions are right for peat to continue to form, and where species of plants and animals typical to intact bogs can thrive. ARB is listed as a priority habitat in Annex I of the Habitats Directive.
ANNEX I	Annex I of the EU Habitats Directive lists natural habitats types of Community interest whose conservation requires the designation of SACs.
ANNEX II	Annex II of the EU Habitats Directive lists animal and plant species of Community interest whose conservation requires the designation of SACs.
BIODIVERSITY	A general term used to describe all aspects of biological diversity including the number of species present in a given environment, the genetic diversity present within a species and the number of different ecosystems present within a given environment.
BOG WOODLAND	Woodland formed on a wet peaty substrate, with permanently high groundwater level. The water is poor in nutrients (ombrotrophic) and the ground surface has high cover of bog moss species, with active peat accumulation taking place. Bog Woodland is listed as a priority habitat in Annex I of the Habitats Directive. It differs from dry woodland on bog where peat accumulation is not taking place.
BUNDING	An impervious embankment of material (peat or other) that provides a barrier to retain water behind it.
CARBON SEQUESTRATION	The capture and long-term storage of atmospheric carbon dioxide, including that accumulated by a bog or fen.
CATCHMENT	An area of land contributing water that drains to a defined point. The term river catchment refers to the area of land that drains into a particular river system and is synonymous with the term drainage basin or watershed.
CUTOVER	Areas of bog that have been previously cut (by hand or by mechanical means), although not down to the underlying inorganic substrate. Cutover areas normally consist of a mosaic of cut areas, face banks, pools, drainage ditches, uncut areas of peat, scrub, grassland etc.
DEGRADED RAISED BOG (DRB)	The area of high, uncut bog which has been damaged by human activities but which could be restored to active raised bog again through restoration measures within a period of 30 years. It is listed in Annex I of the Habitats Directive.
ECOLOGY	The study of the interactions between organisms, and their physical, chemical and biological environment.
ECOSYSTEM SERVICES	Humankind benefits from a multitude of resources and processes that are supplied by ecosystems. Collectively, these benefits are known as ecosystem services and include products like clean drinking water and processes such as the decomposition of wastes.
EROSION	The processes whereby the materials of the earth's crust are dissolved, or worn away and simultaneously moved from one place to another by natural processes which include weathering, solution, corrosion and transportation.

EVAPOTRANSPIRATION	Water loss to the atmosphere from soil and other surfaces (evaporation) and vegetation (transpiration).
FACEBANK	Areas at the edge of the high bog where peat cutting has taken place. This is an ecotope that is highly degraded and absent of typical <i>Sphagnum</i> species.
FAUNA	Animal life.
FAVOURABLE CONSERVATION CONDITION	This is the condition of a habitat or species considered to be favourable at site level. Favourable conservation condition is defined by site-specific conservation objectives (SSCOs). The maintenance of habitats and species within sites at favourable condition will contribute to the maintenance of favourable conservation status of those habitats and species at a national level.
FAVOURABLE CONSERVATION STATUS	According to the Habitats Directive the conservation status of a natural habitat will be taken as “favourable” when: its natural range and areas it covers within that range are stable or increasing, and the specific structure and functions which are necessary for its long term maintenance exist and are likely to continue to exist for the foreseeable future, and the conservation status of its typical species is favourable.
FLORA	Plant life.
FLOW ATTENUATION	Slowing flow of water out of an area. This is a common method for reducing risk of flood in urban areas whereby diversion channels store water in attenuation ponds. Intact peatlands typically offer natural flow attenuation through slowing flow as a result of higher storage capacity and increased hydraulic roughness, while degraded peatlands are much less effective at attenuating flow as the peat is dried out encouraging overland flow.
HABITAT	Refers to the environment defined by specific abiotic and biotic factors, in which a species lives at any stage of its biological cycle. In general terms it is a species’ home.
HABITATS DIRECTIVE	Council Directive 92/43/EEC of 21 May 1992 on the conservation of natural habitats and of wild fauna and flora.
HEAD	Hydrological term which is a measure of the height to which water can raise itself above an arbitrary given level or datum.
HIGH BOG	The area of bog which has not previously been cut.
HYDROLOGICAL PROCESSES	The movement of water through a catchment area including freshwater and seawater inputs, water level changes and drainage mechanisms which are all influenced by the underlying geology.
LAGG	A term used to describe the natural habitat that occurs in the transitional zone between the bog and the mineral soil around a raised bog. Few intact lagg

	zones remain around raised bogs in Ireland as they are typically the first location to be damaged by drainage.
LIDAR	A remote sensing technology that measures vertical surface elevation by illuminating a target with a laser and analysing the reflected light usually obtained using a low-flying aeroplane. This provides detailed information on the surface elevations across an area.
LIFE	An EU financial instrument supporting environmental and nature conservation projects throughout the EU.
MARGINAL DRAIN	Drains on the margins of a raised bog typically on cutover for the purpose of draining spread-grounds to facilitate turf-cutting.
MICROTOPOGRAPHY	Variations in elevation at a relatively small scale. Generally the higher points are no more than a metre higher than the low points, and only a couple of metres across. On a high bog this consists of hummocks, hollows, pools, flats and lawns.
MINEROTROPHIC	Refers to soils and vegetation whose water supply comes mainly from streams or springs. This water has flowed over or through rocks or other minerals, often acquiring dissolved chemicals which raise the nutrient levels and reduce the acidity.
NATURAL HERITAGE AREA (NHA)	These are conservation areas designated for protection under The Wildlife (Amendment) Act 2000. NHAs are considered important for the habitats present or which holds species of plants and animals whose habitat needs protection.
NPWS	National Parks and Wildlife Service.
OMBROTROPHIC	Refers to a type of peatland that receives all of its water and nutrient from precipitation falling directly on its surface.
PIEZOMETER	A piezometer is a device used to measure head. In the case of groundwater a piezometer will provide head at a given point.
PEAT-FORMING HABITAT	These are habitats where peat is actively forming. It includes typical ombrotrophic raised bog vegetation as well as lagg or fen vegetation that indicate that peat is actively forming.
PRIORITY HABITAT	A subset of the habitats listed in Annex I of the EU Habitats Directive. These consist of habitats which are in danger of disappearance and whose natural range mainly falls within the territory of the European Union. These habitats are of the highest conservation status and require measures to ensure that their favourable conservation status is maintained.
RAISED BOG	Rain-fed peatland ecosystems that develop primarily in areas with topographic depressions, where drainage may be impeded by a high groundwater table, or by low permeability of the underlying substrata such as clay. Peat accumulation, over time, elevates the ground surface above surrounding areas to form a raised dome.
RESTORATION ZONE	A specified area within a site where restoration measures have been proposed. Restoration zones have been defined for each raised bog SAC based on factors including hydrological conditions, existing and expected habitats following restoration. This allows restoration measures for each raised bog SAC to be split into manageable units.
SITE-SPECIFIC	

CONSERVATION OBJECTIVE	A site-specific conservation objective aims to define the favourable conservation condition of a habitat or species at site level. The maintenance of habitats and species within sites at favourable condition will contribute to the maintenance of favourable conservation status of those habitats and species at a national level.
SPECIAL AREA OF CONSERVATION	Area designated for the conservation of habitats and/or species under the Habitats Directive.
SPREAD-GROUNDS	Area where turf is spread after cutting to dry out, typically drained cutover bog or agricultural areas adjacent to the high bog.
STATUTORY NATURE RESERVE	A Statutory Nature Reserve is an area of nature conservation interest that has been designated by Ministerial Order under the Wildlife Act, 1976.
SUBSIDENCE	Term referring to the sinking of land resulting from natural activity or human activity. Within peat subsidence occurs due to loss of water for example as a result of drainage.
TILL	Geological term referring to unsorted material deposited by glacial ice and showing no stratification. It is often referred to as boulder clay.
TOPOGRAPHY	The arrangement of the physical features of an area.