

National Parks & Wildlife Service

Sharavogue Bog SAC (Site code 000585)



Raised Bog Restoration Plan (Report)

Version 2

October 2022

Contents

1	INTRODUCTION	1
1.1	PURPOSE OF THE RESTORATION PLAN.....	1
1.2	SHARAVOGUE BOG SAC.....	1
1.3	SITE-SPECIFIC CONSERVATION OBJECTIVES	2
2	RESTORATION MEASURES AT SHARAVOGUE BOG SAC	2
2.1	INTRODUCTION	2
2.2	BLOCKING OF HIGH BOG DRAINS	3
2.3	BLOCKING OF DRAINS ON CUTOVER BOG	4
2.4	CONTOUR BUNDING	6
2.5	CELL BUNDING	7
2.6	GENERAL SITE MANAGEMENT	8
3	DRAINAGE MANAGEMENT PLAN	8
4	COMMUNITY BENEFITS	8
5	RESTORATION PLAN IMPLEMENTATION	9
5.1	PREPARATORY ACTIONS.....	9
5.2	PROGRESS TO DATE	10
5.2.1	<i>Hydrological characterisation</i>	<i>10</i>
5.2.2	<i>Review of proposed restoration measures in line with best practice at time of implementation</i>	<i>11</i>
5.2.3	<i>Detailed ecological surveys</i>	<i>11</i>
5.2.4	<i>Landownership Investigations.....</i>	<i>12</i>
5.2.5	<i>Stakeholder consultation and community engagement</i>	<i>12</i>
5.2.6	<i>Compensation/land acquisition</i>	<i>13</i>
5.2.7	<i>Appropriate Assessment Screening</i>	<i>13</i>
5.2.8	<i>Compilation of tender/construction documents and Health & Safety file</i>	<i>13</i>
5.2.9	<i>Surveying setting/out of the Works</i>	<i>13</i>
5.2.10	<i>Implementation of restoration measures</i>	<i>14</i>
5.2.11	<i>Post-Works inspections and preparation of as built survey information.....</i>	<i>15</i>
5.2.12	<i>Update of restoration plan to outline Works completed and remaining Works required in future.</i>	<i>17</i>
6	REFERENCES	21
7	GLOSSARY & ACRONYMS	22

Maps:

Map 1 - Sharavogue Bog SAC Boundary	19
Map 2 - Sharavogue Bog SAC Restoration Measures	20

1 Introduction

1.1 Purpose of the Restoration Plan

This restoration plan has been developed by National Parks and Wildlife Service (NPWS) of the Department of Housing, Local Government and Heritage to set out proposals for restoration of raised bog and associated habitats at Sharavogue Bog Special Area of Conservation (SAC) (000585). This plan identifies technically feasible restoration measures for the various zones of the bog including the high bog, cutover bog and surrounding margins and provides details of progress on implementation of the restoration plan.

The restoration measures set out will enable nature conservation targets for Active Raised Bog (ARB) at this SAC to be met. Although the focus of the restoration plan is on ARB habitat, it is anticipated that restoration measures will also benefit other peatland habitats and can contribute to socio-economic benefits for the local community, improvements to biodiversity and reduced carbon emissions. Monitoring of this restoration plan will be undertaken to ensure that the intended restoration measures are successfully contributing to the achievement of the site-specific targets for ARB at Sharavogue Bog SAC.

Sharavogue Bog SAC is one of 12 project sites where comprehensive restoration was funded under the EU LIFE 2014-2020 programme to restore active raised bog in Ireland's raised bog SAC network (LIFE Nat/IE/000032).

Action 1.1: Develop restoration plan further in partnership with stakeholders.

This restoration plan will be developed further in conjunction with stakeholders to ensure that restoration is carried out in such a way that the conservation requirements of the site can be met, whilst minimising any impacts on adjacent land and maximising benefits to the local community. The plan will develop and change over time through input from stakeholders and **will be considered a living document**. The primary aim of this restoration plan is to ensure site-specific conservation objectives for Sharavogue Bog SAC can be met.

Section 2 of the restoration plan sets out the restoration measures that have been proposed for Sharavogue Bog. Section 3 outlines how a drainage management plan for Sharavogue Bog has been developed to support the implementation of this restoration plan. Section 4 describes potential for community benefits to be explored through the plan and section 5 outlines progress with implementation of the plan at Sharavogue Bog.

Map 1 outlines the location and extent of Sharavogue Bog SAC. Map 2 illustrates the restoration measures that have been implemented to date as well as any proposed/outstanding restoration measures to be implemented at Sharavogue Bog.

This document provides an outline of the restoration plan but is supported by detailed datasets that are available on the NPWS Restoration Maps Viewer. This map viewer provides NPWS with an up-to-date view of all restoration plan details and supporting information including status of landowner investigations, landowner consent, progress with construction and details of proposed and remaining restoration measures.

1.2 Sharavogue Bog SAC

Sharavogue Bog (SAC) is located about 8km south of Birr, Co. Offaly, in the Little Brosna Valley. It is situated between the River Little Brosna and an elevated ridge of Carboniferous limestone. The SAC includes the raised bog and surrounding areas which include cutover bog, wet grassland, semi-natural woodland, and an area of wet lagg vegetation in the cutover along the eastern margin of the bog. The eastern edge is bounded by a disused railway embankment, and the western edge by the river. The

bog is underlain by low permeability limestone and limestone till. Groundwater up-wells at the base of the ridge that occurs to the east of the bog.

The SAC has been selected for three Annex I habitats. These are:

- [7110] Active raised bogs*
- [7120] Degraded raised bogs still capable of natural regeneration
- [7150] Depressions on peat substrates of the *Rhynchosporion*

*Priority habitats

Sharavogue Bog is one of the few remaining raised bogs in Ireland situated on a floodplain. It has a well-developed dome of uncut peat which is long and narrow. There is only a relatively small area of ARB confined to the more central part of the dome. The structure of much of this raised bog is poor as a result of long-term drying out caused by peat cutting. In addition, drains were inserted in about 60% of the high bog dome in the early 1990s though these were subsequently dammed. The bog surface has also been damaged by burning.

This restoration plan has been developed to address restoration measures for these peatland habitats. Restoration at Sharavogue has been substantially completed through the EU LIFE funded Living Bog Project as well as some previous restoration Works carried out by NPWS.

1.3 Site-specific conservation objectives

Detailed site-specific conservation objectives (SSCOs) aim to define the conditions necessary in maintaining or achieving the favourable conservation condition of a habitat or species at site level. The maintenance of habitats and species within sites at favourable condition will contribute to the maintenance of favourable conservation status of those habitats and species at a national level.

A conservation objective has been set for Sharavogue Bog SAC for ARB habitat using attributes and targets based on parameters set out in the Habitats Directive. In summary, one of the key targets is to restore the area of ARB to 40.9 ha. The area of ARB was reported as 25.8 ha during the 2011 monitoring survey and it has been determined that there is potential for 14.7 ha of Degraded Raised Bog (DRB) to be restored to ARB on the high bog following restoration measures. There is also long-term potential for 0.4 ha of bog peat-forming habitats (BPFH) to develop if restoration measures are undertaken on cutover areas. Several targets have been set for other attributes relating to the quality and condition of ARB habitat, including a target to restore adequate transitional areas to support/protect the active raised bog and the ecosystem services it provides. The restoration measures proposed by this restoration plan aim to achieve these targets. Further information on the SSCO can be found in the Sharavogue Bog SAC conservation objectives document (NPWS, 2015a) and the conservation objectives supporting document – raised bog habitats (NPWS, 2015b).

2 Restoration measures at Sharavogue Bog SAC

2.1 Introduction

Hydrological processes are key drivers of raised bog ecology, as raised bogs are predominately fed by precipitation. For ARB to develop or be maintained, mean water levels need to be near or at the bog's surface for most of the year. Seasonal fluctuations should not exceed 20cm below ground surface, and water levels in the peat should be within 10cm of the surface, except for very short periods of time (Kelly & Schouten 2002). Gentle slopes that limit intermittent lateral losses of water (through surface run-off) and encourage sustained waterlogging are the most favourable to achieve these conditions. These conditions may be maintained on steeper slopes in areas of focused flow (flushes) (Mackin et al., 2017a; Regan et al., 2020). However, it will not be possible to raise the water level to high enough

levels across the entire high bog surface, particularly approaching marginal areas, to enable ARB to develop. Even in high bog areas that do not have potential for ARB to form, water levels should be raised as necessary to support habitat for the areas where ARB can occur.

The main aim of restoration on raised bogs is to maintain or improve the quality of existing areas of ARB or improve the hydrological conditions that will allow ARB to develop in areas with suitable topographic conditions (gentle slopes and/or areas of focused flow). This requires measures to be implemented on both the high bog and cutover areas. Measures implemented on selected areas of cutover will also help to minimise the impact that drainage and cutting has had on the hydrological integrity of the high bog and support a diversity of other transitional wetland habitats (e.g. wet woodland and fen), as well as the species they sustain. Once restored, these transitional cutover zones may provide further ecosystem services through flood attenuation and water supply maintenance and purification, increased carbon sequestration and improvements to the site's overall biodiversity value.

The main restoration measures that may be considered for improving hydrological conditions on raised bogs include:

- Drain blocking (includes drains on both high bog and the margins)
- Removal of forestry/tree clearance
- Installation of marginal dams
- High bog excavation/re-profiling
- Inoculation with *Sphagnum* species
- Bunding on high bog or cutover bog

Further details on each of these measures can be found in the Irish Wildlife Manual No. 99 'Best practice in raised bog restoration in Ireland' (Mackin et al, 2017b). Additional measures may be considered in particular instances where there are specific problems that are causing damage to an SAC. The most relevant restoration measures for Sharavogue Bog SAC are outlined in Section 2.2 – 2.6 below.

2.2 Blocking of high bog drains

Blocking high bog drains slows the flow of water off the surface of the bog and increases the water table in the peat. Drain blocking is a proven and effective restoration measure on Irish raised bogs with minimal maintenance requirements. The approach has been demonstrated at a number of raised bogs in Ireland with very positive results evident in less than 10 years (**Figure 2.1**) as outlined by Fernandez *et al.* (2014).

Sometimes, there are concerns from local communities living close to raised bogs that drain blocking on the high bog will result in, or exacerbate, flooding. Blocking high bog drains, in fact, slows the flow of water off the bog potentially reducing the frequency and magnitude of flood events by restoring the hydrological function of the bog. To address these concerns NPWS developed a drainage management plan for Sharavogue Bog in advance of the implementation of the restoration plan, with further details of this plan outlined within section 3.



Figure 2.1 Example of a peat dam used to block a typical high bog drain.

Action 2.1: Block high bog drains within Sharavogue Bog SAC.

All bog drains have been blocked on Sharavogue Bog, as most drains were blocked in the past as part of previous restoration projects carried out by NPWS. However, ongoing monitoring of drain blocking activity is required to ensure dams do not fail over time. Details of the locations of blocked drains on the high bog can be found in Map 2.

2.3 Blocking of drains on cutover bog

Blocking of cutover drains slows the flow of water off the cutover areas and increases the water table in the surrounding peat. This can help to reduce the rate of infiltration through the high bog and can lead to conditions that allow peat to form on the cutover (**Figure 2.2**).

Drain blocking on cutover areas has been carried out at a number of raised bogs in Ireland to date resulting in the development of peat-forming vegetation on cutover areas. As with blocking of high bog drains, there are sometimes concerns from local communities living close to raised bogs that drain blocking on cutover bog will result in, or exacerbate, flooding. Blocking drains on cutover bog can slow the rate at which water is lost from the bog therefore potentially reducing the frequency and magnitude of downstream flood events. This restoration measure is primarily focused on former spread-grounds and only in very rare occasions, where it is absolutely essential, includes agricultural land. Drains in these areas will only be blocked in agreement with landowners and where there is a suitable hydrological barrier such as a functional drain to prevent impacts outside of the restoration

area.



Figure 2.2 Water table at the surface of cutover bog following successful drain blocking resulting in *Sphagnum* development less than 10 years after drain blocking (this was previously an area of bare peat)

Action 2.2: Block drains on selected cutover areas within Sharavogue Bog SAC.

Most of the cutover drains have already been blocked on Sharavogue Bog, with only a small number of drains remaining to be blocked. However, ongoing monitoring of the drain blocking activity is required to ensure dams do not fail over time. In addition, there are several remaining drains to be blocked. Blocking of cutover drains may reduce ongoing subsidence of the high bog and in some areas will also lead to the development of peat forming habitats. It is proposed that these drains are blocked, primarily with peat dams, with some plastic reinforcements where necessary to prevent erosion. In some areas blocking with peat dams is not possible and may lead to the formation of deep water therefore partial blocking using plastic dams has been proposed. The required conditions are for the water table to be maintained at or close to the surface, therefore large areas of standing water or deep pools are not desired. Details of the locations on the cutover where it is proposed to block drains can be found in Map 2.

2.4 Contour bunding

Contour bunds on the high bog aims to reduce the rate of lateral flow through the upper layers of the peat. In contrast to some other bunding techniques, contour bunding is not intended as a means of impounding surface water. This method involves excavating a trench 1.5-2.0m deep, re-compacting peat into the trench and building a slightly raised bund 25-30cm above the current ground surface. In addition, these bunds have 5m long 'finger bunds' constructed using the same technique at approximately 25m spacing to prevent flow along the bund which may lead to erosion. After 1-2 years it is anticipated that the bund will have subsided close to current ground level and therefore will not appear as a prominent feature on the bog surface.



Figure 2.3 Contour bund constructed at Knockacoller Bog SAC, Co. Laois

Contour bunds are most effective where there is cracking or slumping in the upper layers of the peat as the re-compacted trench assists in sealing up these cracks and slows the flow rate through the peat, supporting a higher water table behind the bund. The key issue with this technique is that the extent of the impact extending back into the bog depends on the hydraulic gradient (which is closely correlated to surface slope). As a result, the extent of impact from such bunds is likely to be extremely limited where the surface slope at the margins is steep. This method is best suited to sites with a relatively gentle slope towards the margins or as a means of effectively blocking a dense network of shallow surface drains on the high bog. Ground conditions will play an important factor in whether the bund can be constructed in such circumstances, therefore this method is most effective on drier sites where machines can operate safely and effectively.

Action 2.3: Assess the feasibility of constructing contour bunds at Sharavogue Bog SAC

There may be potential for contour bunding on some areas of the high bog at Sharavogue Bog. This measure was not used on Sharavogue during the Living Bog Project, but ongoing reviews of the restoration plan should determine whether this measure is applicable. Further opportunities for implementation of this measure should consider the response of the vegetation to existing restoration

measures.

2.5 Cell bunding

Cell bunding involves the creation of individual cells, consisting of a cutoff walls extending into the peat substrate and protruding above the ground surface to create a water table close to or slightly above the ground surface (maximum depth typically 10-20cm). The approach permits the interception of laterally flowing groundwater by low permeability cutoff walls, while the surface bunds prevent lateral discharge of surface water; this also encourages recharge to the underlying water table, helping contribute to the water balance, while also maintaining an elevated water table in those areas up gradient of standing water. Due to topographic variable the depth of water will also vary significant resulting in significant ecological diversity across the bunded area.

Cell bunds are typically constructed by excavating a trench 1.0-1.5m deep, recompact the excavated peat into the trench and constructing a bund 0.5-0.6m high above the ground surface (Figure 2.3). Water level control structures (pipes or overflow weirs) are incorporated into these cells as a means to regulate water levels and evenly distribute water across the site.



Figure 2.4 Example of existing cell bund constructed at Cloncrow Bog NHA (the vegetation in this photo has developed in the 2 years since cell construction)

Action 2.4: Consider the potential for implementation cell bunding at Sharavogue Bog SAC

This measure was not used as part of the Living Bog Project at Sharavogue Bog; however, there may be potential for cell bunding on some areas of the cutover bog. Opportunities for implementation of this measure should consider the response of the vegetation to existing restoration measures.

2.6 General site management

In addition to the proposed measures, it is important that the restoration plan contributes to improving general site management. This includes considering issues such as:

- Fire prevention and response
- Management of littering/fly-tipping

Burning of the high bog can result in significant damage to a raised bog by removing peat-forming vegetation which reduces the capacity of the peat to retain water. This causes much more rapid surface run-off and therefore can result in more widespread drying out and increased peak flows in surrounding streams. No recent fires have been reported at Sharavogue Bog SAC; however, the bog has been damaged through burning in the past.

Issues such as littering, and fly-tipping are also common problems on raised bogs. Depending on the nature of the material dumped this can lead to pollution in surrounding areas.

Action 2.5: Prepare a fire prevention and control plan for Sharavogue Bog SAC in consultation with local stakeholders.

It is proposed that a fire prevention plan is developed for Sharavogue Bog SAC to identify past occurrences of fires, the likely causes and develop an effective plan to prevent fires in future as well as an appropriate response should a fire occur in the future. Issues such as fire prevention and management of littering/fly-tipping also need to be addressed as part of a wider strategy of raising public awareness on the importance of these habitats.

3 Drainage Management Plan

One issue that can cause concerns, particularly for local stakeholders, relates to whether restoration may result in increased flooding in the surrounding area. In many instances bog restoration has the opposite effect by returning more natural hydrological conditions whereby flow is attenuated and reaches the surrounding watercourses more slowly than when drains were present. This is evident at bogs such as Killyconny Bog SAC (000006) where extensive restoration has been carried out on cutover bog and there have been no adverse impacts on adjoining agricultural land.

Nonetheless, many individuals may remain unconvinced on these issues until several years after restoration has taken place. Therefore, in order to provide reassurance, an integrated drainage management plan for the bog and its surroundings has been developed as part of this restoration plan. The drainage management plan is intended to support the conservation objectives for Sharavogue Bog SAC by ensuring the drainage network can be maintained without impacting on the conservation objectives. The plan assesses instances of existing impediments to the effective management of the drainage network (e.g., undersized culverts or channels) and provides recommendations in relation to remedial Works and maintenance Works going forward. Implementation of such measures will ensure that the risk of flooding will be significantly reduced.

Action 3.1: Engage with local stakeholders in relation to the implementation of recommendations of the Drainage Management Plan for Sharavogue Bog SAC.

Implementing the recommendations of this plan will require engagement with local stakeholders to ensure any management actions completed are carried out in line with best practice guidance.

4 Community benefits

Through consultation with the local community and other stakeholders it will be possible to develop ideas for maximising socio-economic benefits for the local community through restoration. These might include building or improving existing facilities where appropriate (i.e., tracks, board walks, bog

bridges), encouraging the creation of small tourism enterprises, promoting the benefits to human health and well-being and enhancing the value of the site as an educational resource. There are many cases where local communities, including local businesses, are actively involved in or supporting the conservation and restoration of raised bogs across the country. Examples of this are found at Abbeyleix Bog (Co. Laois), Carrownagappul Bog SAC (Co. Galway), Girley Bog Natural Heritage Area (NHA) (Co. Meath), Lodge Bog (Co. Kildare) and Scohaboy Bog NHA (Co. Tipperary).

Sharavogue Bog is unlikely to be an ideal site for recreation and amenity given the bog is accessed via very narrow local roads. Although there is an old railway track along the eastern boundary of this site, this occurs in an area where a significant area of lagg vegetation has developed. Any potential for recreation or amenity use should consider other bogs in the surrounding area and only be carried out in a way that supports the site specific conservation objectives for the site.

Apart from immediate economic benefits, the restoration of raised bogs can provide many other benefits to the wider community, such as provision of clean water, flood attenuation and water flow regulation, preservation of archaeological artefacts and other sources of historical knowledge and, not least, helping Ireland reduce its national greenhouse gas emissions and, therefore, helping to combat climate change.

Action 4.1: Optimise the community benefits of the restoration plan.

As the restoration plan is further developed and implemented, opportunities to improve the recreation and amenity value of the bog and surrounding areas and promote local initiatives, while protecting and enhancing its natural values, will be explored by and with the local community. Promoting community involvement in the long-term management of the site both during and after restoration measures are carried out, will be encouraged.

5 Restoration Plan Implementation

5.1 Preparatory actions

Prior to implementation of the restoration plan several preparatory actions are required before construction of restoration measures can commence. A summary of these preparatory actions is outlined below:

- Hydrological characterisation – collation of existing hydrological data, hydrological surveys, instrumentation with monitoring data (where necessary);
- Review of proposed restoration measures in line with best practice at the time of implementation (including exploring opportunities to implement enhanced measures);
- Detailed ecological surveys (primarily comprising surveys of cutover areas, but where necessary also includes high bog areas e.g., if ecotopes have not been surveyed in many years);
- Landownership Investigations (investigations into ownership, turbary rights etc.);
- Stakeholder consultation and community engagement (meeting with stakeholders to outline restoration plans and consider any concerns raised by the local community);
- Compensation/land acquisition (compensation or acquisition of lands required to implement the required restoration measures on private lands);
- Appropriate Assessment Screening;
- Compilation of tender/construction documents including preparation of health and safety file;
- Surveying and setting out of the Works;

- Implementation of restoration measures (including construction supervision and contract administration);
- Post-Works inspections and preparation of as-built survey information;
- Update of restoration plan to outline Works completed and remaining Works required in future. This includes updating status of all Works within the NPWS GIS-based data viewer.

5.2 Progress to date

Significant progress has been made in implementing the proposed restoration plan at Sharavogue Bog SAC with all restoration Works now substantially complete. Further reviews of the restoration plan will take place as results from future ecological monitoring determines whether any additional actions are needed to achieve site specific conservation objectives for the bog. A summary of progress to date is outlined below:

5.2.1 Hydrological characterisation

Status – Complete

Detailed hydrological characterisation of Sharavogue Bog SAC was carried out in 2018 as part of the Living Bog Project. This comprised of detailed surveys of the high bog and cutover to collect data to enable the restoration plan to be refined. A detailed hydrological monitoring network was established in 2018, comprising twelve phreatic monitoring wells and six deep piezometers to monitor vertical hydraulic gradients across the bog (high bog and cutover). These were monitored manually at monthly intervals, with a subset of four monitoring wells instrumented with automated data logging equipment. This enabled the collection of baseline data to inform restoration plan design as well as assess the hydrological impact of restoration measures. This information was used as a feedback mechanism in reviewing the restoration plan. Targeted monitoring is ongoing as part of the AfterLIFE plan of the Living Bog project which will continue until 2027 (Cushnan & Crowley, 2022).

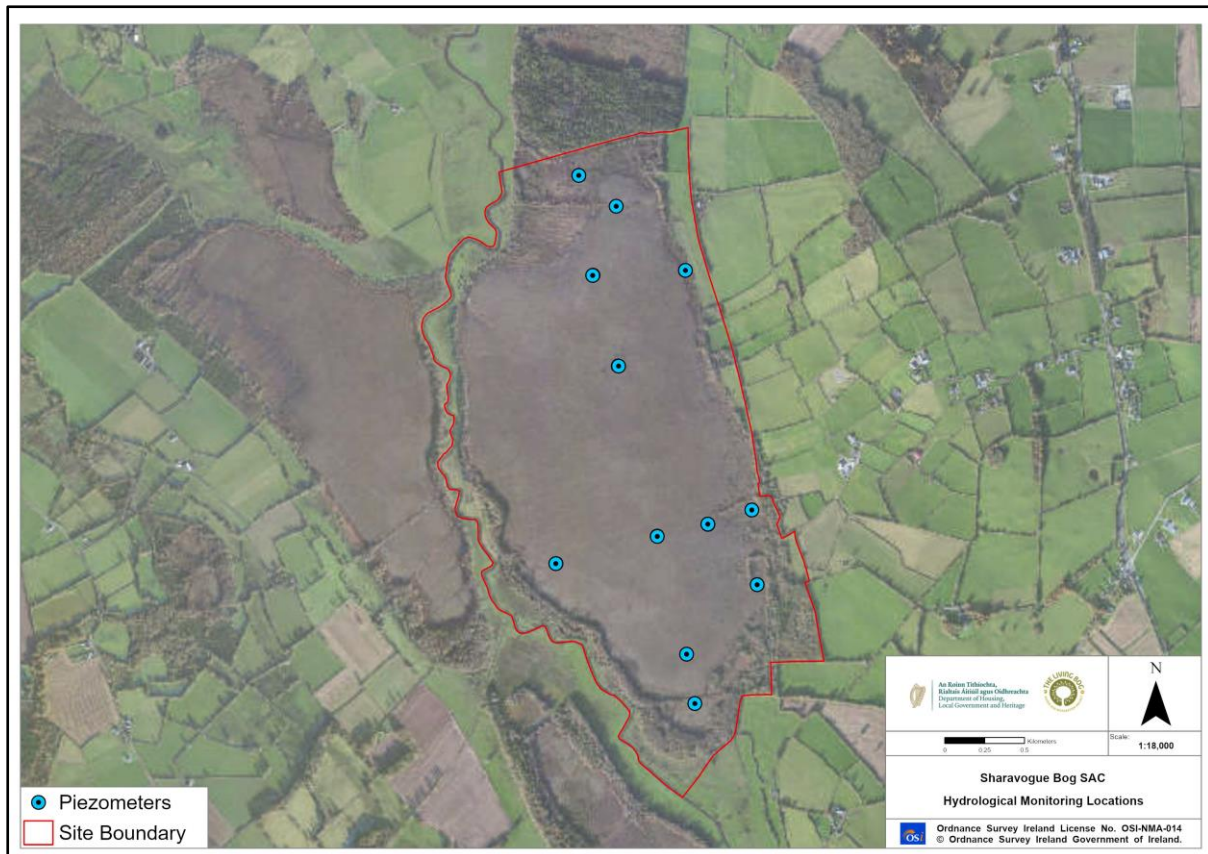


Figure 5.1 Location of hydrological monitoring network at Sharavogue Bog SAC

5.2.2 Review of proposed restoration measures in line with best practice at time of implementation

Status - Complete

Following detailed hydrological characterisation of Sharavogue Bog SAC in 2018, a comprehensive review of proposed restoration measures was completed which identified some minor modifications required to the restoration plan, particularly in the drain along the eastern boundary of the bog. Details of the restoration measures implemented at Sharavogue Bog are illustrated in Map 2.

5.2.3 Detailed ecological surveys

Status - Complete

The most recent ecotope survey of Sharavogue Bog SAC was completed in September 2011, which determined that at that time active raised bog (7110) covered 25.78ha of the high bog (Fernandez et al. 2014b). This was comprised entirely of sub-central ecotope with no central ecotope recorded. A follow up ecotope survey of Sharavogue was not completed as part of the Living Bog Project, although the majority of the restoration measures occurred in the cutover. Future monitoring will be completed by NPWS when the vegetation has had more time to respond to restoration measures.

In addition to the high bog survey, a methodology for detailed vegetation mapping of cutover habitats was developed as part of the Living Bog Project and published as Irish Wildlife Manual No. 128 'The Habitats of Cutover Raised Bog' (Smith & Crowley, 2020). A cutover survey carried out in accordance with this methodology was completed at Sharavogue which identified that there are pockets of high *Sphagnum* areas throughout the cutover area, although the cutover was found to be dominated by Low *Sphagnum* types. However, this is expected to increase as the vegetation begins to respond to

rewetting measures (Crowley & Smith, 2022). The high bog and cutover surveys completed as part of the Living Bog Project provides a baseline status that can be used to monitor the results of restoration measures in future.

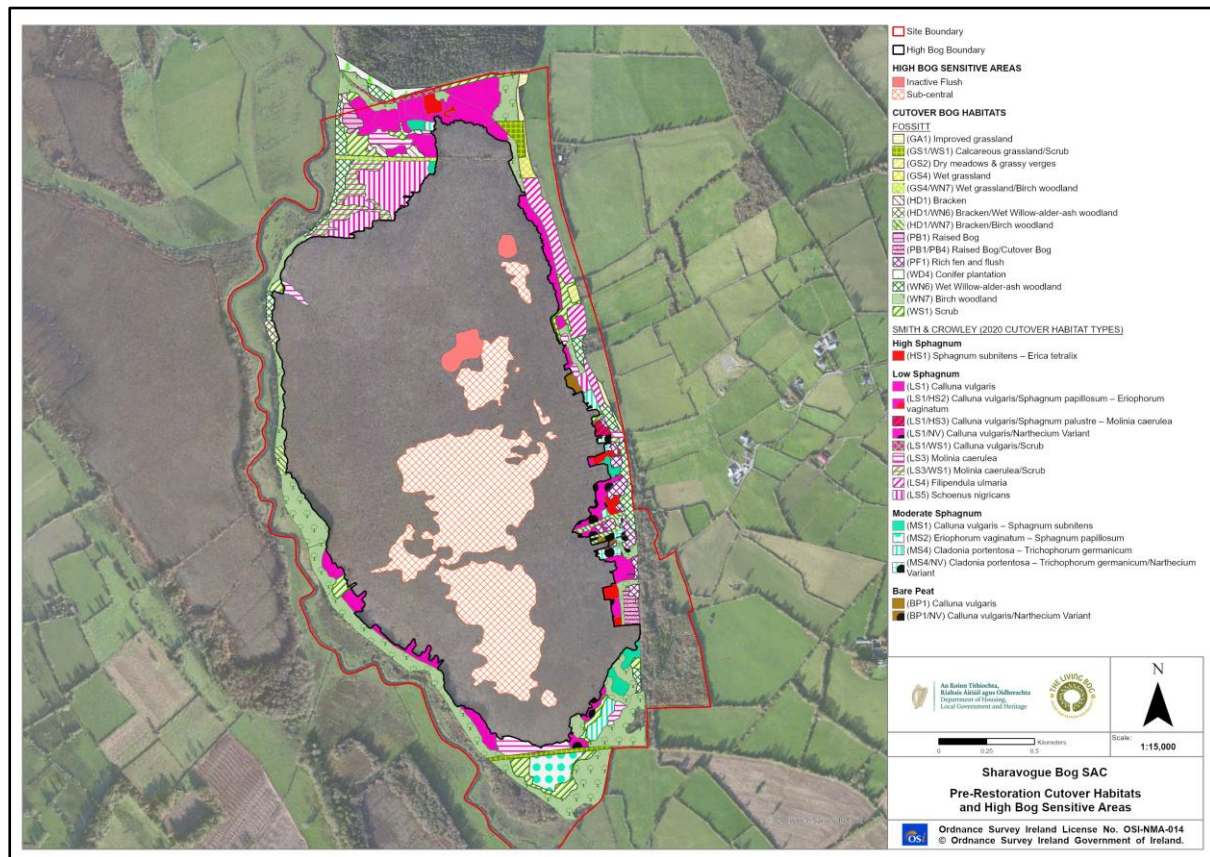


Figure 5.2 Ecological monitoring results at Sharavogue Bog (pre-restoration) SAC illustrating high bog and cutover vegetation types

5.2.4 Landownership Investigations

Status – Complete

Comprehensive landownership investigations were completed at Sharavogue Bog SAC as part of the Living Bog Project. The identified that the bog is predominantly in private ownership, with small pockets of public ownership across the bog. This process allowed identification of key stakeholders to meet during the stakeholder consultation and community engagement phase.

5.2.5 Stakeholder consultation and community engagement

Status – Complete

Comprehensive stakeholder consultation and community engagement was carried out at Sharavogue Bog SAC as part of the Living Bog Project. The Living Bog Project team developed strong working relationships with key members of the local community. The team held meetings with stakeholders including landowners and interested community groups. At these meetings project aims, and restoration plans were presented to the stakeholders. This has included meeting with all private individuals owning the freehold or having a turbary right at the bog.

5.2.6 Compensation/land acquisition

Status – Complete

Compensation has been offered to and accepted by almost all landowners and turbary right holders within the bog which enabled the restoration Works to proceed at the bog.

5.2.7 Appropriate Assessment Screening

Status – Complete

An Appropriate Assessment Screening report was prepared to consider the potential for significant effects on any European Sites from the implementation of the restoration plan at Sharavogue Bog SAC. As the bog has been selected as a Special Area of Conservation for the presence of raised bog habitats, the proposal to allow restoration measures to take place in Sharavogue Bog SAC **is directly connected with and necessary to the management of this site as a European site**. The proposed restoration measures are essential to support the reestablishment of appropriate hydrological conditions within the SAC to enable nature conservation targets for Active Raised Bog (ARB) at this SAC to be met.

However, following a precautionary approach and to inform a risk assessment, a screening for Appropriate Assessment report was prepared to assess, in view of best scientific knowledge and in view of the conservation objectives of those European sites considered, whether or not the project, individually or in combination with other plans or projects, is likely to have a significant effect on any European site.

The findings of this screening exercise determined that the proposed restoration measures:

- Will not give rise to potential likely significant effects on the Qualifying Interests/Special Conservation Interests of any other European site within the project's zone of influence, in view of best scientific knowledge and in view of the conservation objectives of those sites; and
- Will not give rise to potential in-combination or cumulative effects with the other plans or projects considered.

5.2.8 Compilation of tender/construction documents and Health & Safety file

Status – Complete

A work package comprising details of restoration measures that could be implemented was compiled by the Living Bog Project Team, which included detailed specifications for the proposed measures. In addition, a health and safety file was compiled to ensure the Works could be carried out in accordance with the Safety, Health and Welfare at Work (Construction) Regulations. Generally, this work involves the following activities:

- Identify hazards arising from the design of the various schemes.
- Eliminate these hazards, or where not practicable to do so, reduce the risk of these hazards.

5.2.9 Surveying setting/out of the Works

Status – Complete

The surveying and staking out of drains and dams can be difficult due to the nature of the bog environment. Vegetation and soft ground conditions can make identification of features and surveying of same difficult and potentially dangerous. The setting out of the Works is generally done using bamboo stakes to mark the locations of the restoration measures that are to be constructed such as the dams or bunds. All Works carried out as part of the Living Bog Project of the restoration plan were set out as required which facilitated work being completed. This activity provides an additional

opportunity to review the restoration measures in detail on the ground and where necessary minor modifications can be made (e.g., adjusting the placement of particular dams due to dense vegetation coverage or alignment of bunds due to ground conditions). This ensure that the risk of damage to the raised bog is minimized as inadequate planning can increase the risk of machines entering unsuitable areas.



Figure 5.3 Example of Surveyor setting out on a high bog

5.2.10 Implementation of restoration measures

Status – Complete

All of the proposed as part of the Living Bog Project were completed as required at Sharavogue Bog SAC. This includes construction of 311 dams, which were primarily constructed from peat but also included a number of plastic dams. Partial drain blocking with plastic dams was completed on a small number of drains to raise the water level without impacting on access tracks used by private individuals. A techniques manual which details each of these methods, including the methods developed through the Living Bog Project, was produced as part of the project (Cushnan et al., 2022).

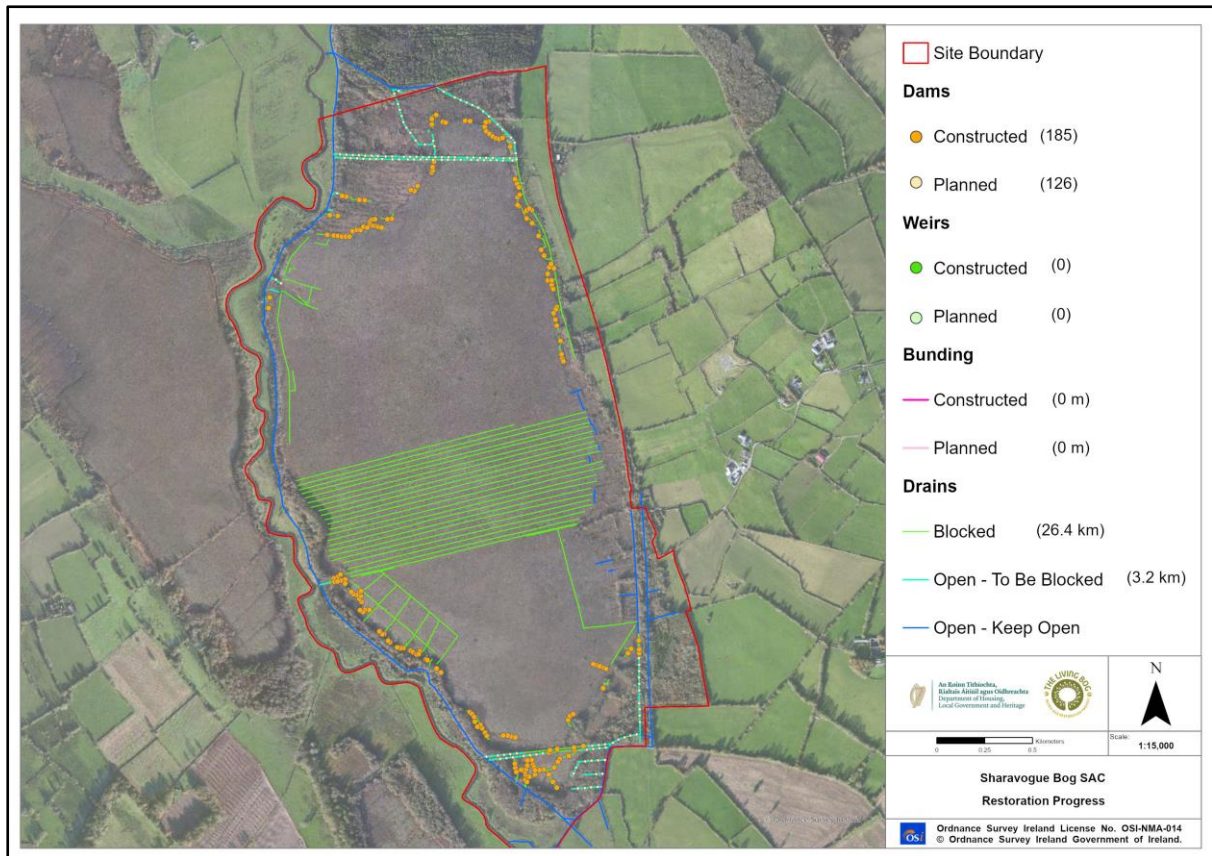


Figure 5.4 Summary of Works completed to date

5.2.11 Post-Works inspections and preparation of as built survey information.

Status – Phase 1 Complete (further phases required)

Post-Works inspections have been completed and an as-built drawing was prepared by Bord na Móna on behalf of the Living Bog Project (summarised in Figure 5.). This included detailed aerial surveys of the bog to collect high-resolution ortho-imagery and to ensure a detailed as-built drawing could be prepared.

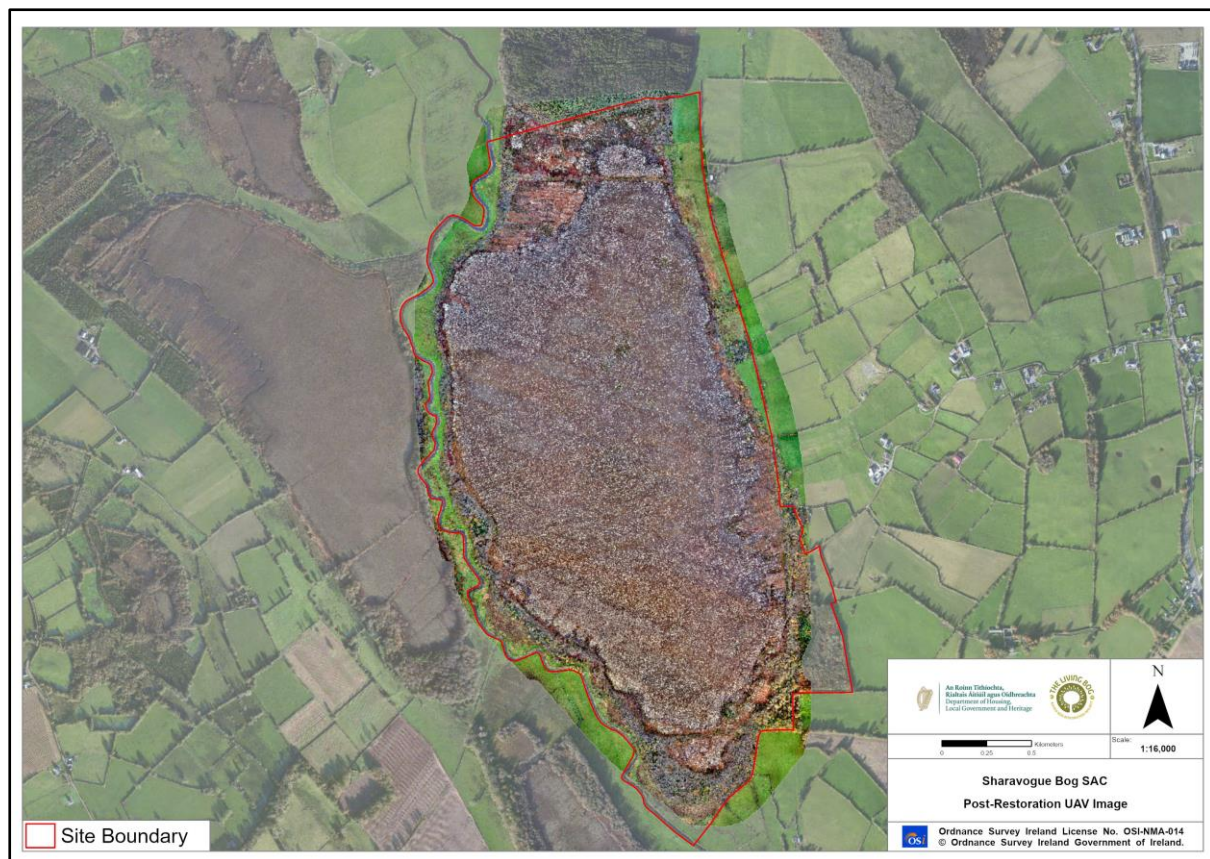


Figure 5.5 High resolution post-Works ortho imagery from UAV survey



Figure 5.6 Example of drain blocking carried out on the high bog and cutover



Figure 5.7 Example of drain blocking carried out on the high bog and cutover illustrating the contrast with the adjacent grassland on mineral soils



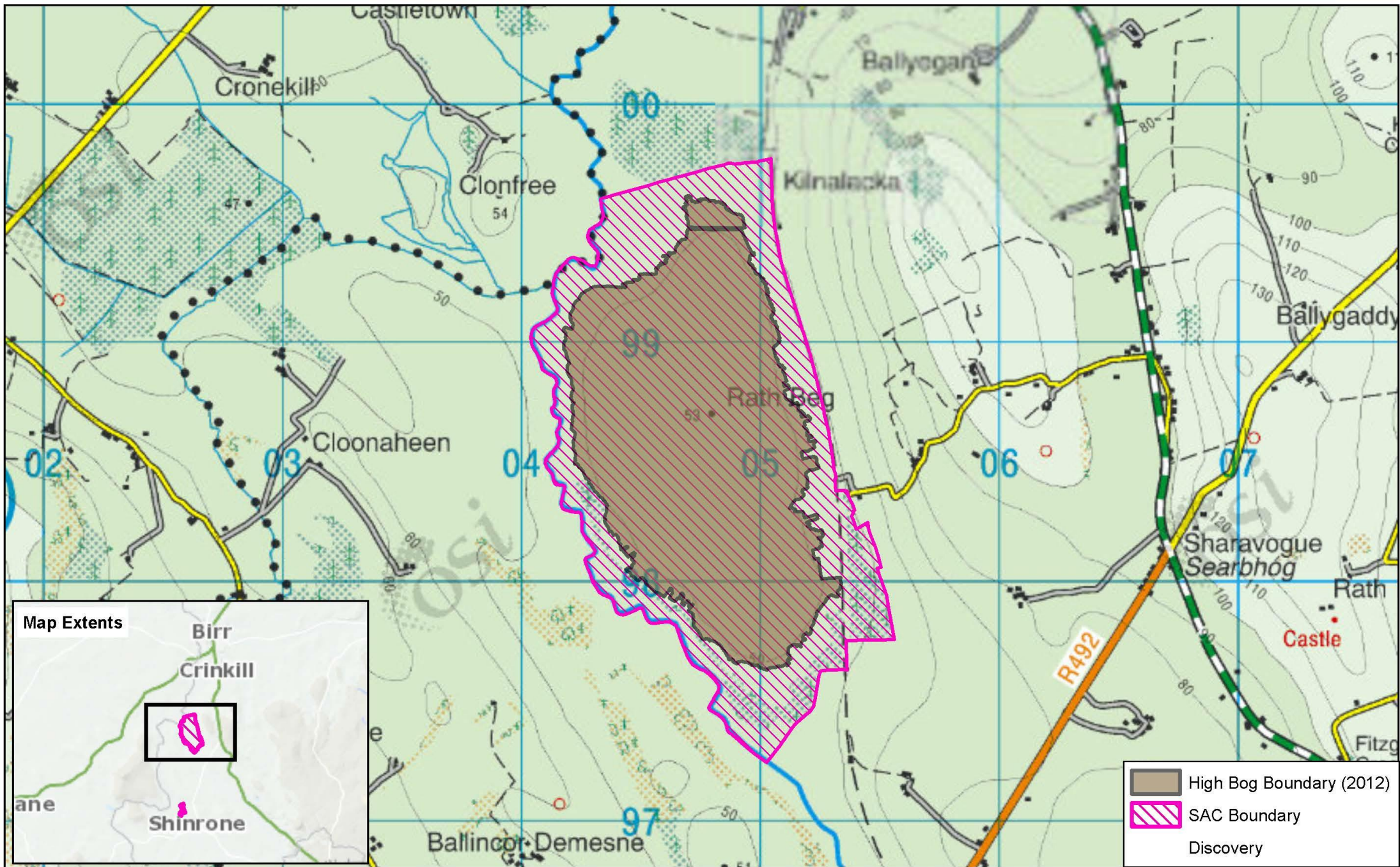
Figure 5.8 Post-Restoration ortho imagery at Sharavogue Bog SAC

5.2.12 Update of restoration plan to outline Works completed and remaining Works required in future.

Status – ongoing

This restoration plan has been updated with the details of the Works completed to date as part of the Living Bog and previous NPWS restoration project. At present no significant restoration Works are outstanding; however, as future monitoring surveys are completed by NPWS the need for additional

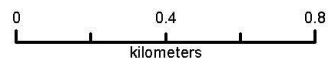
restoration measures will be considered and this restoration plan updated as required. This restoration plan will also be reviewed on an ongoing basis as experience and best-practice evolves nationally and internationally.



An Roinn Tithíochta,
Rialtais Áitiúil agus Oidhreacht
Department of Housing,
Local Government and Heritage

Map 1 Sharavogue Bog SAC

Site Name: Sharavogue Bog SAC
Site Code: 000585; Version 3.01
County: Offaly



The mapped boundaries are of an indicative and general nature only.
Boundaries of designated areas are subject to revision.
Ordnance Survey Ireland Licence No OSI_NMA_014
© Ordnance Survey Ireland / Government of Ireland



 Site Boundary

Dams

 Dams (311)

Weirs


 Weirs (0)

Bunding

 Bunding (0 m)

Drains

 Open - To Be Blocked (7.2 km)

 Open - Keep Open

 Blocked - Already Blocked



An Roinn Tithíochta,
Rialtais Aitiúil agus Oidhreachta
Department of Housing,
Local Government and Heritage



N



0 0.25 0.5 Kilometers

Scale: 1:15,000

Sharavogue Bog SAC Overall Restoration Plan



Ordnance Survey Ireland License No. OSI-NMA-014
© Ordnance Survey Ireland Government of Ireland.

6 References

- Crowley, W. and Smith, G. F. (2022) Restoring Active Raised Bog in Ireland's SAC Network 2016 – 2020 (LIFE14 NAT/IE/000032): D2: Vegetation Monitoring Final Report. The Living Bog Project/National Parks and Wildlife Service, Ireland. (<https://raisedbogs.ie/wp-content/uploads/2022/09/Appendix-7-D2-Vegetation-Monitoring-Final-Report.pdf>)
- Cushnan, H. and Crowley, W. (2022) Restoring Active Raised Bog in Ireland's SAC Network 2016 – 2020 (LIFE14 NAT/IE/000032): AfterLIFE Hydrology & Vegetation Monitoring Plan. The Living Bog Project/National Parks and Wildlife Service, Ireland. (<https://raisedbogs.ie/wp-content/uploads/2022/09/Appendix-29-F6-AfterLIFE-Hydrology-Monitoring-Plan-D002.pdf>)
- Cushnan, H., O'Hara, S., Kieran, P., Mackin, F. (2022) Restoring Active Raised Bog in Ireland's SAC Network 2016 – 2020 (LIFE14 NAT/IE/000032): LIFE Technical Manual – Review of Best Practice Measures. The Living Bog Project/National Parks and Wildlife Service, Ireland. (<https://raisedbogs.ie/wp-content/uploads/2022/09/Appendix-23-E10-LIFE-Projects-Technique-Manual-D01.docx.pdf>)
- Fernandez, F., Connolly K., Crowley W., Denyer J., Duff K. & Smith G. (2014a) Raised bog monitoring and assessment survey 2013. Irish Wildlife Manuals, No. 81. National Parks and Wildlife Service, Department of Arts, Heritage and Gaeltacht, Dublin, Ireland.
- Fernandez, F., Connolly K., Crowley W., Denyer J., Duff K. & Smith G. (2014a) Raised bog monitoring and assessment survey 2013. Sharavogue Bog SAC: Site Report. Irish Wildlife Manuals, No. 81. National Parks and Wildlife Service, Department of Arts, Heritage and Gaeltacht, Dublin, Ireland.
- Fossitt, J. (2000) A Guide to Habitats in Ireland. The Heritage Council, Ireland.
- Kelly, L. & Schouten, M.G.C. (2002) Vegetation. In: Schouten, M.G.C. (ed.), Conservation and restoration of raised bogs: geological, hydrological and ecological Studies. Dúchas – The Heritage Service of the Department of the Environment and Local Government, Ireland; Staatsbosbeheer, the Netherlands; Geological Survey of Ireland, Dublin. pp. 110-169.
- Mackin, F., Barr, A., Rath, P., Eakin, M., Ryan, J., Jeffrey, R. & Fernandez Valverde, F. (2017a) Best practice in raised bog restoration in Ireland. *Irish Wildlife Manuals*, No. 99. National Parks and Wildlife Service, Department of Culture, Heritage and the Gaeltacht, Ireland.
- Mackin, F., Flynn, R., Barr, A & Fernandez-Valverde, F. (2017b) Use of geographical information system-based hydrological modelling for development of a raised bog conservation and restoration programme. *Ecological Engineering*, 106(Part A); pp. 242-252.
- NPWS (2015a) Sharavogue Bog SAC (site code 000585) Conservation objectives. National Parks and Wildlife Service, Ireland. (http://www.npws.ie/sites/default/files/protected-sites/conservation_objectives/CO000585.pdf)
- NPWS (2015b) Sharavogue Bog SAC (site code 000585) Conservation objectives supporting document - raised bog habitats. National Parks and Wildlife Service, Ireland. ([http://www.npws.ie/sites/default/files/publications/pdf/Sharavogue%20Bog%20SAC%20\(000585\)%20Conservation%20objectives%20supporting%20document%20-%20Raised%20Bog%20habitats%20\[Version%201\].pdf](http://www.npws.ie/sites/default/files/publications/pdf/Sharavogue%20Bog%20SAC%20(000585)%20Conservation%20objectives%20supporting%20document%20-%20Raised%20Bog%20habitats%20[Version%201].pdf))
- Regan, S., Swenson, M., O'Connor, M. & Gill, L. (2020). Ecohydrology, Greenhouse Gas Dynamics and Restoration Guidelines for Degraded Raised Bogs. A report prepared for the Environmental Protection Agency, Ireland.
- Smith, G.F. & Crowley, W. (2020) The habitats of cutover raised bog. Irish Wildlife Manuals, No. 128. National Parks and Wildlife Service, Department of Housing, Local Government and Heritage, Ireland.

7 Glossary & Acronyms

ACTIVE RAISED BOG (ARB)	Areas of uncut raised bog where the conditions are right for peat to continue to form, and where species of plants and animals typical to intact bogs can thrive. ARB is listed as a priority habitat in Annex I of the Habitats Directive.
ANNEX I	Annex I of the EU Habitats Directive lists natural habitats types of Community interest whose conservation requires the designation of SACs.
ANNEX II	Annex II of the EU Habitats Directive lists animal and plant species of Community interest whose conservation requires the designation of SACs.
BIODIVERSITY	A general term used to describe all aspects of biological diversity including the number of species present in a given environment, the genetic diversity present within a species and the number of different ecosystems present within a given environment.
BOG WOODLAND	Woodland formed on a wet peaty substrate, with permanently high groundwater level. The water is poor in nutrients (ombrotrophic) and the ground surface has high cover of bog moss species, with active peat accumulation taking place. Bog Woodland is listed as a priority habitat in Annex I of the Habitats Directive. It differs from dry woodland on bog where peat accumulation is not taking place.
BUNDING	An impervious embankment of material (peat or other) that provides a barrier to retain water behind it.
CARBON SEQUESTRATION	The capture and long-term storage of atmospheric carbon dioxide, including that accumulated by a bog or fen.
CATCHMENT	An area of land contributing water that drains to a defined point. The term river catchment refers to the area of land that drains into a particular river system and is synonymous with the term drainage basin or watershed.
CUTOVER	Areas of bog that have been previously cut (by hand or by mechanical means), although not down to the underlying inorganic substrate. Cutover areas normally consist of a mosaic of cut areas, face banks, pools, drainage ditches, uncut areas of peat, scrub, grassland etc.
DEGRADED RAISED BOG (DRB)	The area of high, uncut bog which has been damaged by human activities but which could be restored to active raised bog again through restoration measures within a period of 30 years. It is listed in Annex I of the Habitats Directive.
ECOLOGY	The study of the interactions between organisms, and their physical, chemical and biological environment.
ECOSYSTEM SERVICES	Humankind benefits from a multitude of resources and processes that are supplied by ecosystems. Collectively, these benefits are known as ecosystem services and include products like clean drinking water and processes such as the decomposition of wastes.
EROSION	The processes whereby the materials of the earth's crust are dissolved, or worn away and simultaneously moved from one place to another by natural processes which include weathering, solution, corrosion and transportation.

EVAPOTRANSPIRATION	Water loss to the atmosphere from soil and other surfaces (evaporation) and vegetation (transpiration).
FACEBANK	Areas at the edge of the high bog where peat cutting has taken place. This is an ecotope that is highly degraded and absent of typical <i>Sphagnum</i> species.
FAUNA	Animal life.
FAVOURABLE CONSERVATION CONDITION	This is the condition of a habitat or species considered to be favourable at site level. Favourable conservation condition is defined by site-specific conservation objectives (SSCOs). The maintenance of habitats and species within sites at favourable condition will contribute to the maintenance of favourable conservation status of those habitats and species at a national level.
FAVOURABLE CONSERVATION STATUS	According to the Habitats Directive the conservation status of a natural habitat will be taken as “favourable” when: its natural range and areas it covers within that range are stable or increasing, and the specific structure and functions which are necessary for its long term maintenance exist and are likely to continue to exist for the foreseeable future, and the conservation status of its typical species is favourable.
FLORA	Plant life.
FLOW ATTENUATION	Slowing flow of water out of an area. This is a common method for reducing risk of flood in urban areas whereby diversion channels store water in attenuation ponds. Intact peatlands typically offer natural flow attenuation through slowing flow as a result of higher storage capacity and increased hydraulic roughness, while degraded peatlands are much less effective at attenuating flow as the peat is dried out encouraging overland flow.
HABITAT	Refers to the environment defined by specific abiotic and biotic factors, in which a species lives at any stage of its biological cycle. In general terms it is a species’ home.
HABITATS DIRECTIVE	Council Directive 92/43/EEC of 21 May 1992 on the conservation of natural habitats and of wild fauna and flora.
HEAD	Hydrological term which is a measure of the height to which water can raise itself above an arbitrary given level or datum.
HIGH BOG	The area of bog which has not previously been cut.
HYDROLOGICAL PROCESSES	The movement of water through a catchment area including freshwater and seawater inputs, water level changes and drainage mechanisms which are all influenced by the underlying geology.
LAGG	A term used to describe the natural habitat that occurs in the transitional zone between the bog and the mineral soil around a raised bog. Few intact lagg

	zones remain around raised bogs in Ireland as they are typically the first location to be damaged by drainage.
LIDAR	A remote sensing technology that measures vertical surface elevation by illuminating a target with a laser and analysing the reflected light usually obtained using a low-flying aeroplane. This provides detailed information on the surface elevations across an area.
LIFE	An EU financial instrument supporting environmental and nature conservation projects throughout the EU.
MARGINAL DRAIN	Drains on the margins of a raised bog typically on cutover for the purpose of draining spread-grounds to facilitate turf-cutting.
MICROTOPOGRAPHY	Variations in elevation at a relatively small scale. Generally the higher points are no more than a metre higher than the low points, and only a couple of metres across. On a high bog this consists of hummocks, hollows, pools, flats and lawns.
MINEROTROPHIC	Refers to soils and vegetation whose water supply comes mainly from streams or springs. This water has flowed over or through rocks or other minerals, often acquiring dissolved chemicals which raise the nutrient levels and reduce the acidity.
NATURAL HERITAGE AREA (NHA)	These are conservation areas designated for protection under The Wildlife (Amendment) Act 2000. NHAs are considered important for the habitats present or which holds species of plants and animals whose habitat needs protection.
NPWS	National Parks and Wildlife Service.
OMBROTROPHIC	Refers to a type of peatland that receives all of its water and nutrient from precipitation falling directly on its surface.
PIEZOMETER	A piezometer is a device used to measure head. In the case of groundwater a piezometer will provide head at a given point.
PEAT-FORMING HABITAT	These are habitats where peat is actively forming. It includes typical ombrotrophic raised bog vegetation as well as lagg or fen vegetation that indicate that peat is actively forming.
PRIORITY HABITAT	A subset of the habitats listed in Annex I of the EU Habitats Directive. These consist of habitats which are in danger of disappearance and whose natural range mainly falls within the territory of the European Union. These habitats are of the highest conservation status and require measures to ensure that their favourable conservation status is maintained.
RAISED BOG	Rain-fed peatland ecosystems that develop primarily in areas with topographic depressions, where drainage may be impeded by a high groundwater table, or by low permeability of the underlying substrata such as clay. Peat accumulation, over time, elevates the ground surface above surrounding areas to form a raised dome.
RESTORATION ZONE	A specified area within a site where restoration measures have been proposed. Restoration zones have been defined for each raised bog SAC based on factors including hydrological conditions, existing and expected habitats following restoration. This allows restoration measures for each raised bog SAC to be split into manageable units.
SITE-SPECIFIC	

CONSERVATION OBJECTIVE	A site-specific conservation objective aims to define the favourable conservation condition of a habitat or species at site level. The maintenance of habitats and species within sites at favourable condition will contribute to the maintenance of favourable conservation status of those habitats and species at a national level.
SPECIAL AREA OF CONSERVATION	Area designated for the conservation of habitats and/or species under the Habitats Directive.
SPREAD-GROUNDS	Area where turf is spread after cutting to dry out, typically drained cutover bog or agricultural areas adjacent to the high bog.
STATUTORY NATURE RESERVE	A Statutory Nature Reserve is an area of nature conservation interest that has been designated by Ministerial Order under the Wildlife Act, 1976.
SUBSIDENCE	Term referring to the sinking of land resulting from natural activity or human activity. Within peat subsidence occurs due to loss of water for example as a result of drainage.
TILL	Geological term referring to unsorted material deposited by glacial ice and showing no stratification. It is often referred to as boulder clay.
TOPOGRAPHY	The arrangement of the physical features of an area.